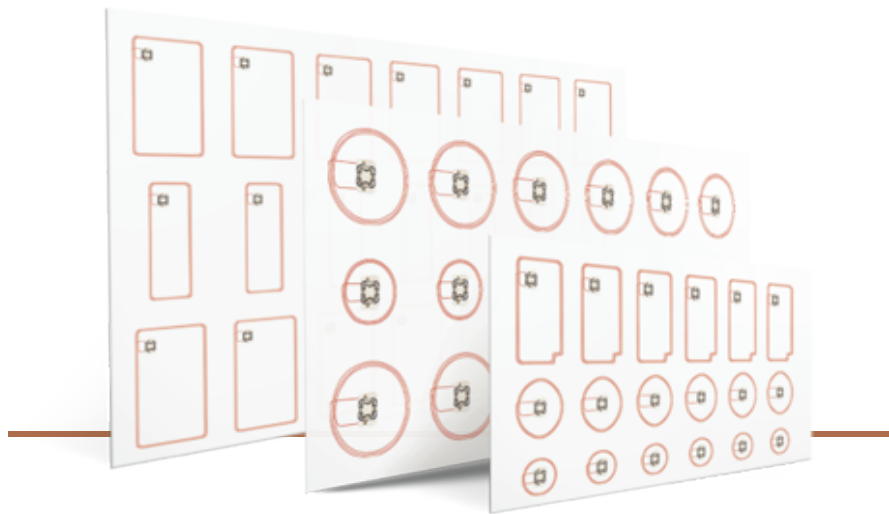


Contactless Inlay

Copper-Wire Embedding Antenna Inlay

The Contactless Inlay is for lamination to be a smart card. Inlay can be customized with different antenna format, layout and frequency request. Using copper wire embedding technology which enhances the stability of antenna performance.



Features

- Antenna is using Copper wire embedding technology which is more stable and reliable.
- can be transparent, the module/antenna can be seen.
- Inlay is customized according to different requirements.

Specifications

- **Any module:** ISO14443A, ISO15693, Mifare DESFire or dual-interface modules & etc.
- **Any Antenna Format:** Round, Square, Rectangle & etc.
- **Any Inlay Format:** 2x4, 3x7, 3x8, 4x8, 5x5, 6x8 & etc.
 - **Available Material:** PVC or PET-G
 - **Maximum Inlay size:** 670X520mm
- **Standard Thickness of MOA4 Inlay:** 0.41±0.03mm

Inlay Technical Features

- **Available Inlay format:**
2x3, 2x4, 2x5, 3x6, 3x7, 3x8, 4x4, 4x5, 4x6, 4x7, 4x8, 4x10, 5x5, 5x6, 6x6, 6x7, 6x8, 6x10, and etc.
- **Maximum Dimension:** 670 x 520mm
- **Operating Temperature:** -20 °C to +50 °C

| Material | Frequency | Thickness | Packaging | Available ICs* |
|----------|--------------|--------------|-----------|-------------------|
| PVC | 15.6 ±0.5Mhz | 0.41±0.03mm | MOA4 | NXP S50 |
| PVC | 15.5 ±0.5Mhz | 0.41±0.03mm | MOA4 | NXP S70 |
| PVC | 15.6 ±0.5Mhz | 0.33±0.03mm | MOA8 | NXP S50 |
| PVC | 15.6 ±0.5Mhz | 0.45±0.03mm | MOA2 | NXP S50 |
| PVC | 15.8 ±0.5Mhz | 0.41±0.03mm | MOA4 | NXP DESFire |
| PVC | 15.4 ±0.5Mhz | 0.41±0.03mm | MOC8 | Infineon SLE66R35 |
| PVC | 14.2 ±0.5Mhz | 0.45±0.03mm | COB | NXP Ultralight |
| PVC | — | 0.45±0.03mm | NOA3 | Legic |
| PET-G | 15.6 ±0.5Mhz | 0.42±0.03mm | MOA4 | NXP S50 |
| PET-G | 15.5 ±0.5Mhz | 0.42±0.03mm | MOA4 | NXP S70 |
| PET-G | 15.6 ±0.5Mhz | 0.395±0.03mm | MOA8 | NXP S50 |
| PET-G | 15.8 ±0.5Mhz | 0.42±0.03mm | MOA4 | NXP DES Fire |
| PET-G | 15.4 ±0.5Mhz | 0.42±0.03mm | MCC8 | Infineon SLE66R35 |
| PET-G | 14.2 ±0.5Mhz | 0.46±0.03mm | COB | NXP Ultralight |
| PET-G | — | 0.51±0.03mm | NOA3 | Legic |

* Other ICs are available upon request